

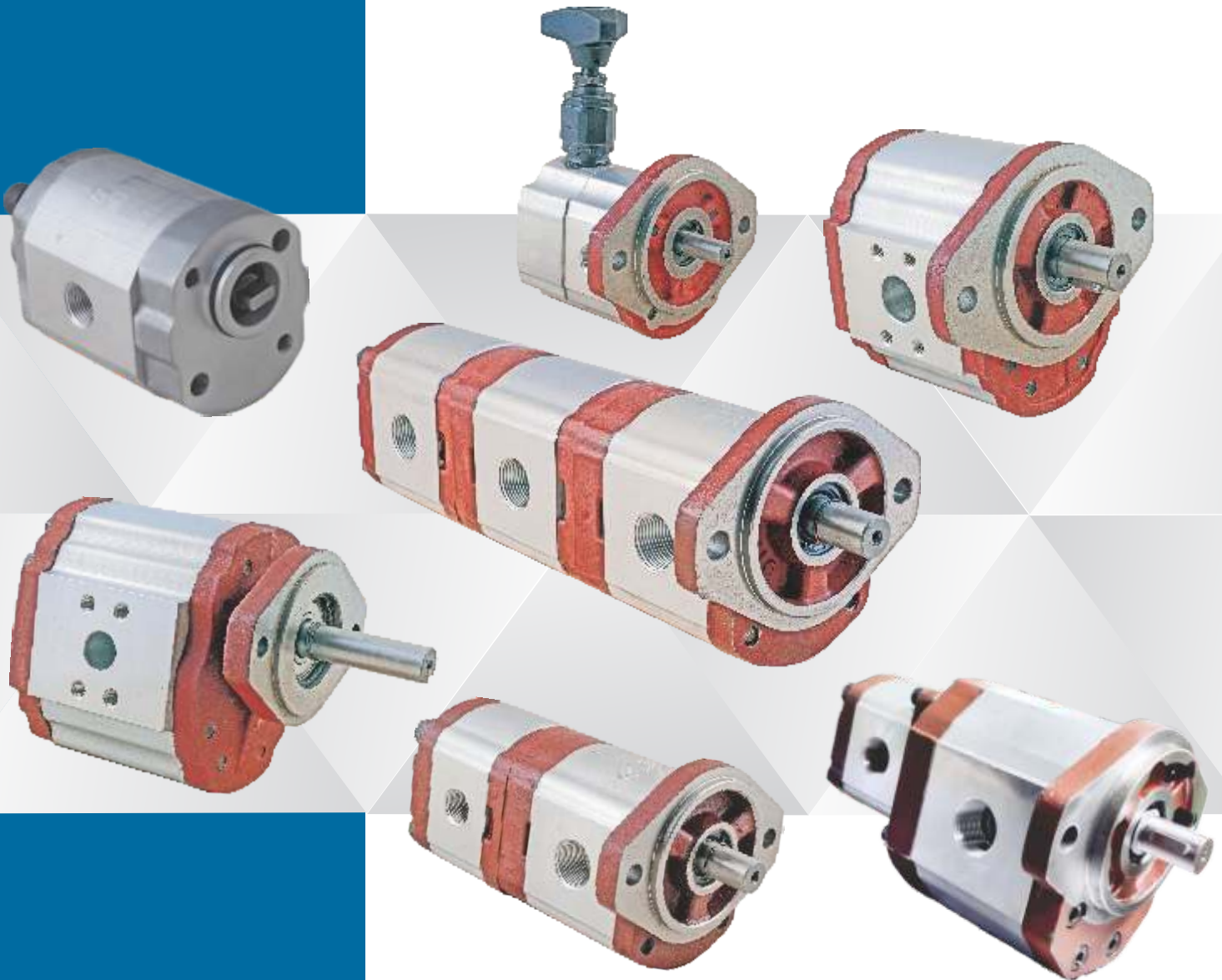
BOSS HYDRAULICS LLP
(Formerly known as S.S. Hydraulics)
An ISO 9001:2015 Company
Since Year 2000..

Celebrating
24 Years



BOSS
HYDRAULICS LLP

Hydraulic Gear Pumps Mini Power Packs



Award for Quality Winner
2018 - 2019



Member:

EPCINDIA
ENGINEERING THE FUTURE



BOSS Hydraulics LLP (Formerly Known as SS Hydraulics) is an ISO 9001:2015 Certified Company. We produce Hydraulic Gear Pumps with Aluminium extrusion housing, Hydraulic Mini Power Packs (AC, DC) and Hand Pump under the brand name of **BOSS**. SINCE THE YEAR 2000...

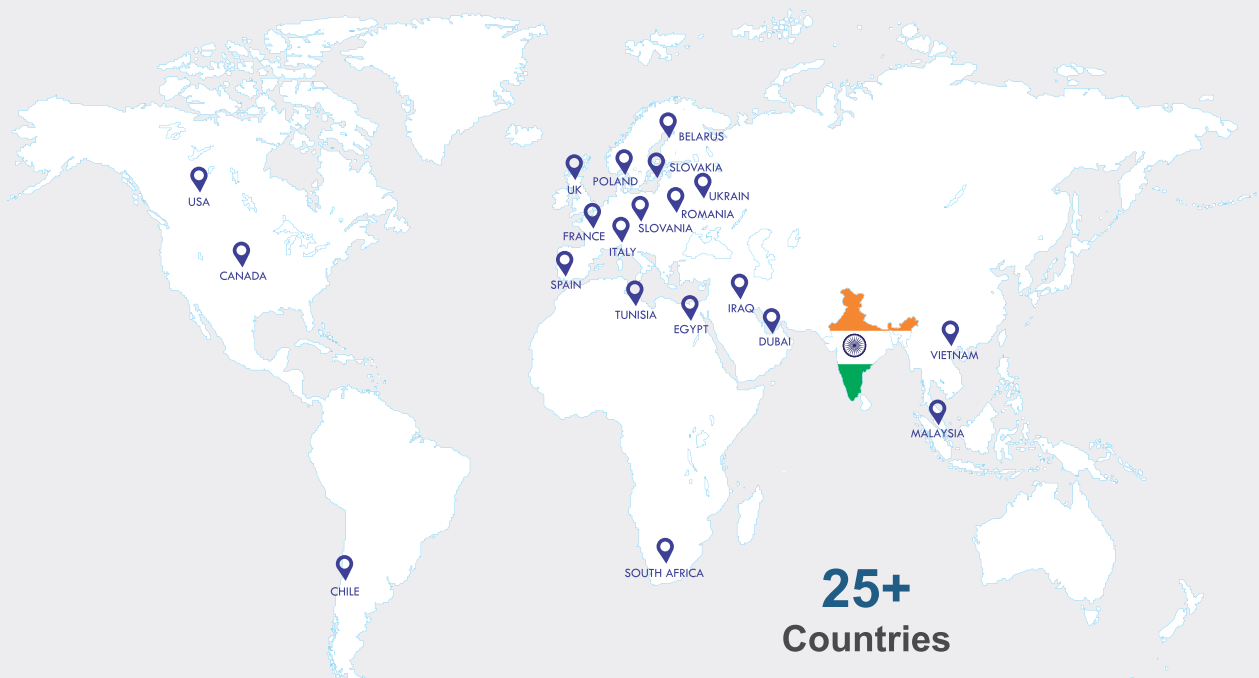
BOSS Hydraulics LLP has Customer across the globe BOSS HYDRAULICS LLP, having state-of-the-art manufacturing facilities, incorporates the largest process technologies, It is able to meet varied customer needs with range of over 100 different types of hydraulic pumps with displacement ranging from 0.8 cc to 67 cc with maximum pressure of 250 Bar.

BOSS Hydraulics LLP also having Distribution Division of Hydraulic Parts like Hydraulic Motors, Hydraulic Steering Units, Hydraulic Control Valves, which are Imported from across the Globe and distributing in India under the brand of **Merbok**

Boss Hydraulics LLP export under the Brand of **Merbok** to more than 25+ countries, including USA, RUSSIA, UK, ITALY, FRANCE, POLAND BELARUS, ROMANIA, SLOVAKIA, SLOVENIA, EGYPT, UAE, MALAYSIA, VIETNAM etc...



GLOBAL PRESENCE





« DESIGN

BOSS Hydraulics LLP has Designing with 3D Software Solidworks 2020 for Modelling and Drafting. BOSS Hydraulics LLP has Reverse Engineering Facility with CMM with PH20 Auto-Probing 5-Axis System (Renishaw).

QUALITY »

- Quality with Precise Measurement (0.00001mm) with CMM make Accurate Spectra, using PH20 5-Axis Infinite Indexing Touch Trigger system. Measuring Range: X - 600 mm, Y - 1000 mm, Z - 500 mm.
- Digital Height Gauge with (0.001mm) measurement, make Trimos from Switzerland. Measuring Range 400 mm.
- Surface value measurement with Roughness Tester make- mitutoyo.



« VMC SHOP

HAAS (USA) make machine with Rotary table 360 (4 Axis). ACE Micromatic make machine with Pallet Changer.

CNC ANGULAR GRINDING »

3 Axis CNC Cylindrical Angular Grinding Machine, with in process width control and OD Control Gauge from MARPOSS (Italy).



« CNC SHOP

BOSS Hydraulics LLP has equipped with CNC Lathes which includes HAAS (USA) and ACE Micromatic India Producing all major components in-house machining.



GEAR SHOP »

BOSS Hydraulics LLP equipped with Churchill Gear Hobbing machine and Red Ring UK Gear Shaving Machine for making in-house gear production.



TESTING FACILITIES

« ASSEMBLY & TESTING

BOSS Hydraulics LLP has DUST PROOF assembly room with Temperature control with AC for making assembly very precisely with controlled tolerance components for better performance.

GROUP OOP PUMP TECHNICAL DATA

Pump type	Nominal Delivery lpm @ 1500 rpm	Max. Working Pressure (P1) in Bar	Max Speed rpm	Ports	
				Suction	Delivery
P-50	7.5	200	3000	G 1/2"	G 3/8"
P-75	11.25	200	3000	G 1/2"	G 1/2"



GROUP OP TECHNICAL DATA



Pump type	Nominal Delivery lpm @ 1500 rpm	Max. Working Pressure (P1) in Bar	Max Speed rpm	Ports	
				Suction	Delivery
6003	1.2	200	3000	G 3/8"	G 3/8"
6004	1.8	200	3000		
6006	2.5	200	3000		
6008	3.4	200	3000		
6011	4.8	200	3000		
6013	5.8	200	3000	G 1/2"	G 1/2"
6015	6.8	200	3000		

GROUP 1P TECHNICAL DATA

Pump type	Nominal Delivery lpm @ 1500 rpm	Max. Working Pressure (P1) in Bar	Max Speed rpm	Ports	
				Suction	Delivery
BHP14	6.8	250	3500	G 1/2"	G 1/2"
BHP17	8.0	250	3500		
BHP20	9.5	250	3500		
BHP28	13.1	250	3500		
BHP36	16.6	250	3500		
BHP44	20.5	250	3000	G 3/4"	G 3/4"
BHP52	24.0	250	3000		
BHP60	27.7	230	3000		
BHP72	33.0	210	3000		
BHP90	41.0	180	2500		



Technical specification are approximate values and subject to change without notice.
Note: All The Values shown for reference purpose only

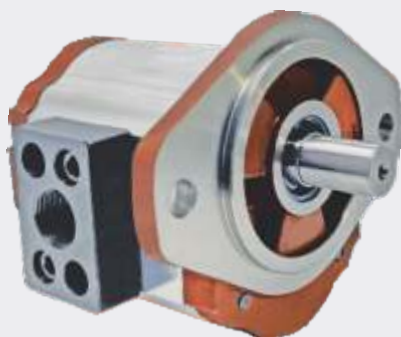
HYDRAULIC GEAR PUMPS

GROUP 2P PUMP TECHNICAL DATA

Pump type	Nominal Delivery lpm @ 1500 rpm	Max. Working Pressure (P1) in Bar	Max Speed rpm	Ports	
				Suction	Delivery
6050	23.0	200	2900	3/8"-16 UNC (x4) 1" BSP Thread	3/8"-16 UNC (x4) 3/4" BSP Thread
6070	32.0	200	2900		
6090	41.0	200	2900		
6105	48.0	200	2900		
6120	54.5	200	2900		
6146	66.5	170	2500		
6158	72.0	170	2500		
6185	84.0	150	2400		
6220	100.0	130	2400		



2P NANO PUMP TECHNICAL DATA



MODEL NO.	Nominal Delivery lpm @ 1500 rpm	Max. Working Pressure (P1) in Bar	Max Speed rpm	Ports	
				Suction	Delivery
BGP 23	23.0	180	2900	G-1"	G-3/4"
BGP 32	32.0	180	2900		
BGP 41	41.0	180	2900		
BGP 48	48.0	180	2900		
BGP 54	54.5	180	2900		
BGP 66	66.5	150	2500		
BGP 72	72.0	150	2500		
BGP 84	84.0	150	2400	G-1-1/2"	G-1"
BGP 100	100.0	100	2400		

GROUP G3 PUMP TECHNICAL DATA

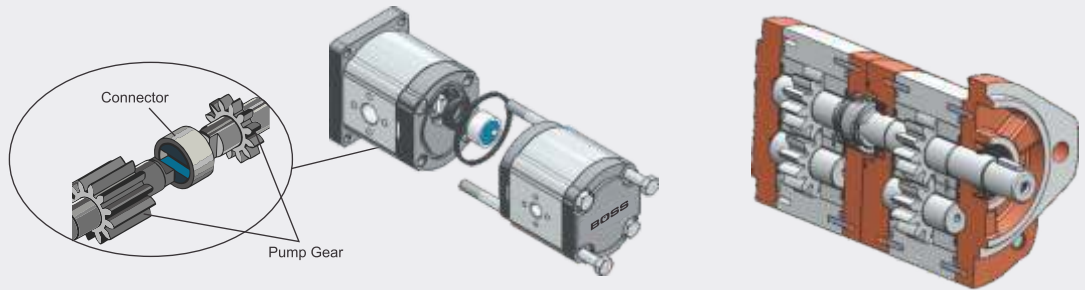
Model No.	Nominal Delivery lpm @ 1500 rpm	Max. Working Pressure (P1) in Bar	Max Speed rpm	Ports	
				Suction	Delivery
G320	28.0	250	3000	G 3/4"	G 3/4"
G322	31.0	250	3000		
G325	36.0	250	3000		
G328	40.0	250	3000		
G332	46.0	250	3000	G-1"	
G336	51.0	250	2800		
G342	60.0	230	2500		
G346	66.0	230	2300		
G350	72.0	200	2100		
G355	79.0	200	1750		
G360	86.0	180	1750	G 1-1/4"	



Technical specification are approximate values and subject to change without notice.
Note: All The Values shown for reference purpose only

TANDEM PUMPS

WE ARE MANUFACTURE TANDEM PUMPS WITH 'OLDHAM COUPLING' CONNECTION.



GROUP - 0P - 0P »

PUMPS are available in SAE two bolt flang with Parallel shafts.
Displacements: 2.4 lpm to 14 lpm. Maximum Pressure @ **200 bar**



« GROUP - 1P - 1P

BHP+BHP series has developed for **HIGH PRESSURE APPLICATION**, which can use up to **230 bar** maximum pressure. Pumps are available in SAE two bolt & four bolt flanges with parallel, spline & taper shafts.
Displacement: 14 lpm to 82 lpm. Maximum pressure @ **230 bar**.

GROUP - 1P - 1P - 1P »

BHP+BHP+BHP series has developed for **HIGH PRESSURE APPLICATION**, which can use up to **230 bar** maximum pressure. Pumps are available in SAE two bolt & four bolt flanges with parallel, spline & taper shafts.
Displacement: 27 lpm to 123 lpm. Maximum pressure @ **230 bar**.



« GROUP - 1P - 0P

PUMPS are available in SAE two bolt & four bolt flanges with parallel, spline & shafts.
Displacements: 8 lpm to 48lpm. Maximum Pressure @ **200 bar**

GROUP - 2P - 1P »

PUMPS are available in SAE two bolt & four bolt flanges with parallel, spline and tapers shafts.
Displacements:30 lpm to 140 lpm. Maximum Pressure @ **200 bar**

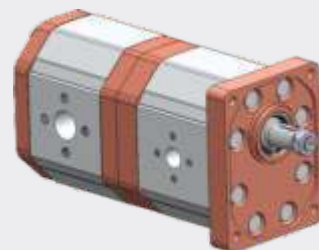


« GROUP - 2P - 2P

PUMPS are available in SAE two bolt & four bolt flanges with parallel, spline and tapers shafts.
Displacements:45 lpm to 200 lpm. Maximum Pressure @ **200 bar**

GROUP - G3 +G3 »

PUMPS are available in SAE two bolt & four bolt flanges with parallel, spline and tapers shafts.
Displacements:56 lpm to 170 lpm. Maximum Pressure @ **250 bar**



« GROUP - G3 +1P

PUMPS are available in SAE two bolt & four bolt flanges with parallel, spline and tapers shafts.
Displacements:35 lpm to 125 lpm. Maximum Pressure @ **250 bar**

SPECIAL APPLICATION PUMPS



HAND PUMP

Manual Pumps for single acting cylinder.
Displacement 14 cc with working pressure 200 bar.



HYDRAULIC MINI POWER PACKS (AC/DC)

AC/DC HYDRAULICS Mini Power Packs which cover 12 volt (1.6 kW), 24 volt (2.2 kW) / 48 volt (0.8 kW) DC and from 0.5 HP to 3 HP single and three phase, with flow range from 1 CC to 5 CC/rev. Our AC/DC Power Packs are manufactured with temperature protector and multiple options of valve configuration that suit the applications. We also making the power packs as per hydraulic circuit provided by the clients.

AC



DC



HYDRAULIC KIT SUITABLE FOR TIPPER & MINI GARBAGE CARRIER

(SUITABLE FOR FORCE, MAHINDRA, TATA, ACE, BAJAJ, DOST AND PIGGIO THREE & FOUR WHEELERS)



Hydraulic Power Pack 12V / 24V / 48V with solenoid release valve, check valve, relief valve & flow control valve, pump flow 1 cc / 2 cc with maximum pressure of 170 bar with oil reservoir of 15 ltrs. with hydraulic cylinder, battery & electric cable, adaptor, hose pipe & pendant switch.

HYDRAULIC MOTORS



Motor Series: MHM | MHP | MHS

MONOBLOCK CONTROL VALVES

MERBOK HYDRAULIC Directional Valves are manually controlled. Hydraulic directional control valves designed for distribution and control of work flow between generator (pump) and executive mechanisms (cylinder, hydro-motor etc.)

Available of Spool: 1 to 6 Spools available.

Flow Capacity: 40 Ltr & 80 Ltr available.



May 2024

Pumps shown above represent a small portion of our Product Range. Ask for our Product list or visit our Website. We reserve the right to technical modifications. The above products shown only for reference.